



**HEALTHCARE LEADERS
of NEW YORK**

Your official ACHE chapter

FACHE ADVANCEMENT HLNY

Chapter Virtual Info Session

**Thursday, April 16th, 2026
6pm - 7pm ET**



HEALTHCARE LEADERS of NEW YORK

Your official ACHE chapter



Kirk Castillo, FACHE
HLNY Advancement Chair



Agenda

6:00pm-6:05pm
Welcome Introduction by
HLNY Advancement Chair
Kirk Castillo, FACHE
HLNY Chapter, President
Halim Kaygisiz, MHA

6:05pm-6:10pm
FACHE Eligibility, Requirements & Resources by
Kerri Reino, FACHE

6:10pm-6:40pm
Panel Discussion and Q&A by
Latoya O'Gere, FACHE, Moderator

6:40pm-6:55pm
Questions?

6:55pm-7:00pm
Closing Remarks by
HLNY President Elect
Jeena Velzen, FACHE



HEALTHCARE LEADERS of NEW YORK

Your official ACHE chapter



Halim Kaygisiz, MHA

HLNY President



HEALTHCARE LEADERS of NEW YORK

Your official ACHE chapter



Kerri A. Reino, FACHE

Department Administrator,

Stony Brook Emergency Medicine

HLNY Board Secretary

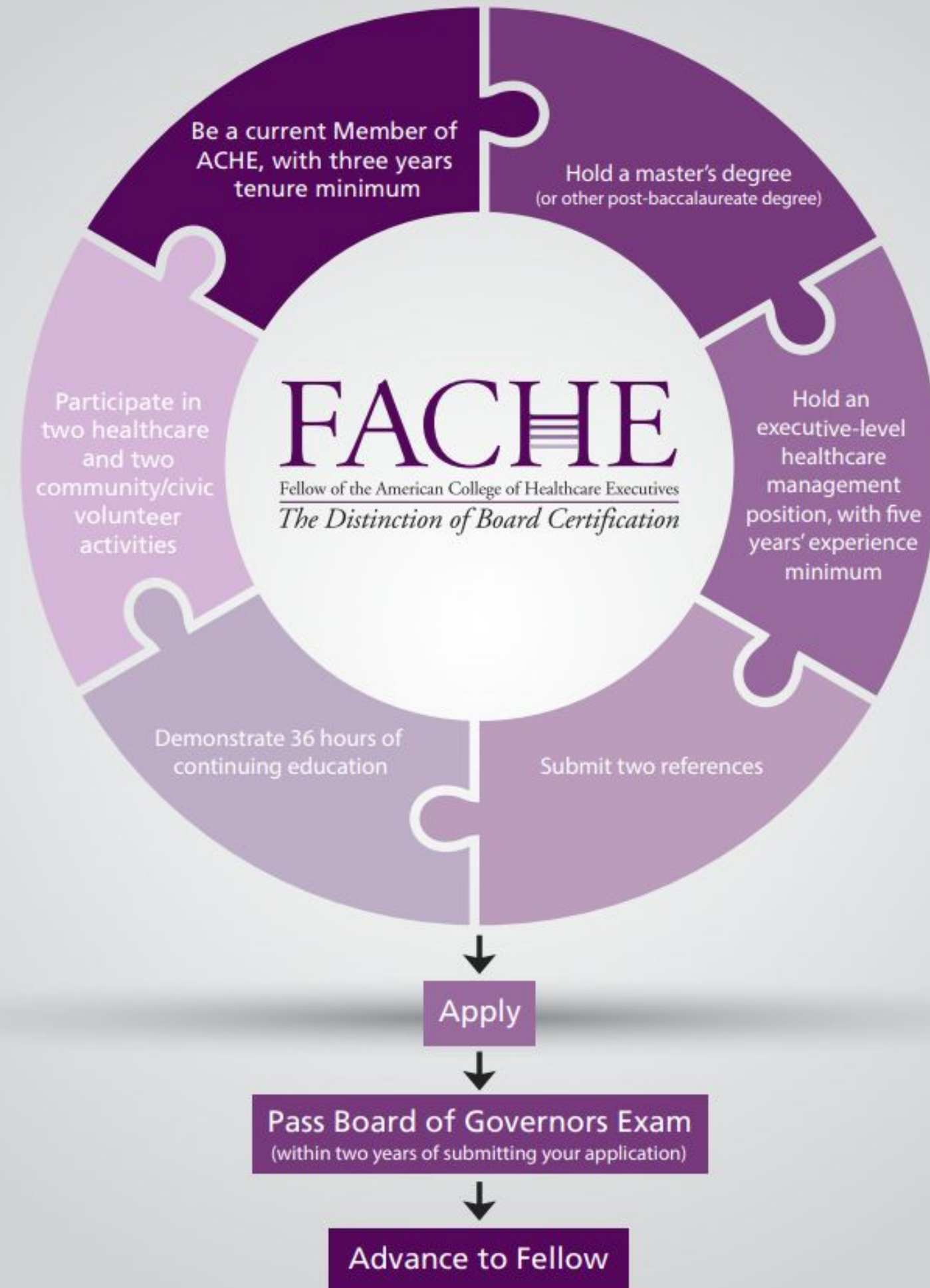


HEALTHCARE LEADERS of NEW YORK

Your official ACHE chapter

- **The FACHE®** credential serves as the gold standard credential for healthcare leadership excellence
- Validates advanced knowledge, skills, and leadership adaptability
- Recognizes leaders meeting rigorous requirements in complex environments

FELLOW ELIGIBILITY REQUIREMENTS





**HEALTHCARE LEADERS
of NEW YORK**
Your official ACHE chapter

Get the distinction of board certification by earning your **FACHE®** credential.

Did you know Fellow Eligibles who apply for Board Certification between March 1 and June 30 qualify for a BOG Exam Fee Waiver?

- All required documents, including application and reference names
- Apply between **March 1 and June 30** to qualify for the **waiver**
- Don't miss out on an opportunity to easily **save \$225**



Questions?

Please contact Advancement Committee leaders at advancement@hlny.org
Schedule a concierge appointment: www.ache.org/fache

Resources:

<https://www.volunteernewyork.org/search>

<https://www.ache.org/fache/prepare-for-my-exam>

<https://www.ache.org/fache/the-board-of-governors-exam/board-of-governors-exam-outline>



**HEALTHCARE LEADERS
of NEW YORK**

Your official ACHE chapter



Scan Me!

VIRTUAL BOG PREP COURSE

Starting, May 6 – June 3, 2026, on Zoom

The HLNY Virtual Prep Course is designed to help healthcare executives prepare for the Board of Governors Exam, aiming to become a Board Certified Fellow of the American College of Healthcare Executives (FACHE).

The 5-day course, led by experienced faculty, covers all ten topic areas with practice questions, discussions, and Q&A sessions. Participants will gain access to presentations, session recordings, and networking opportunities. The course offers up to 7.5 hours of ACHE Qualified Education credits.

All proceeds from the Virtual BOG Exam Preparation Course will be directed to the Foundation, supporting the development and advancement of future healthcare leaders.



**HEALTHCARE LEADERS
of NEW YORK**
Your official ACHE chapter

FACHE ADVANCEMENT INFO SESSION

Thursday April 16th 6pm - 7pm

MODERATOR



**Latoya O'Gere, DNP, RN,
NE-BC, FACHE**

Regional Director of Nursing
NYC Health and Hospitals
Gotham Health

PANELISTS



**Benzy Babykutty, MBA, BSN,
RN, FACHE, FNYAM**

Director Patient Care Services—Critical Care
and Med-Surg
Mount Sinai Morningside



Kathleen Gaine, MPA, FACHE

Senior Director for Regulatory Planning
New York Presbyterian Hospital



**Nicole Rossol, MS, FACHE,
CCLS**

Chief Patient Experience Officer
Stony Brook Medicine



HEALTHCARE LEADERS of NEW YORK

Your official ACHE chapter





HEALTHCARE LEADERS of NEW YORK

Your official ACHE chapter



Jeena Velzen, PhD, FACHE
HLNY President-Elect



HLNY Foundation Scholarship Programs

Supporting Future Healthcare Leaders



Scan to Donate or
Text "HLNYGIVES" to 53-555

Help us develop tomorrow's healthcare leaders

Our Scholarship Programs:

Gianelli ACHE Congress Scholarship

- \$2,500 towards Congress registration
- Including mentorship with Art Gianelli, FACHE

Leonard Achan Sr. Scholarship

- Two annual awards of \$1,500 each
- Monthly advisement and mentorship session

Sganga Family Scholarship for Early Careerist

- \$5,000 awarded to early careerists to help pay of student debt

Making a Difference:

Our Impact

- \$10,500+ in annual scholarships
- Supporting future healthcare leaders
- Building a stronger healthcare community

Your Support Matters

- Tax-deductible donations
- 100% supports scholarship programs
- Create lasting impact



**HEALTHCARE LEADERS
of NEW YORK**
Your official ACHE chapter

UPCOMING EVENTS



Scan Me!

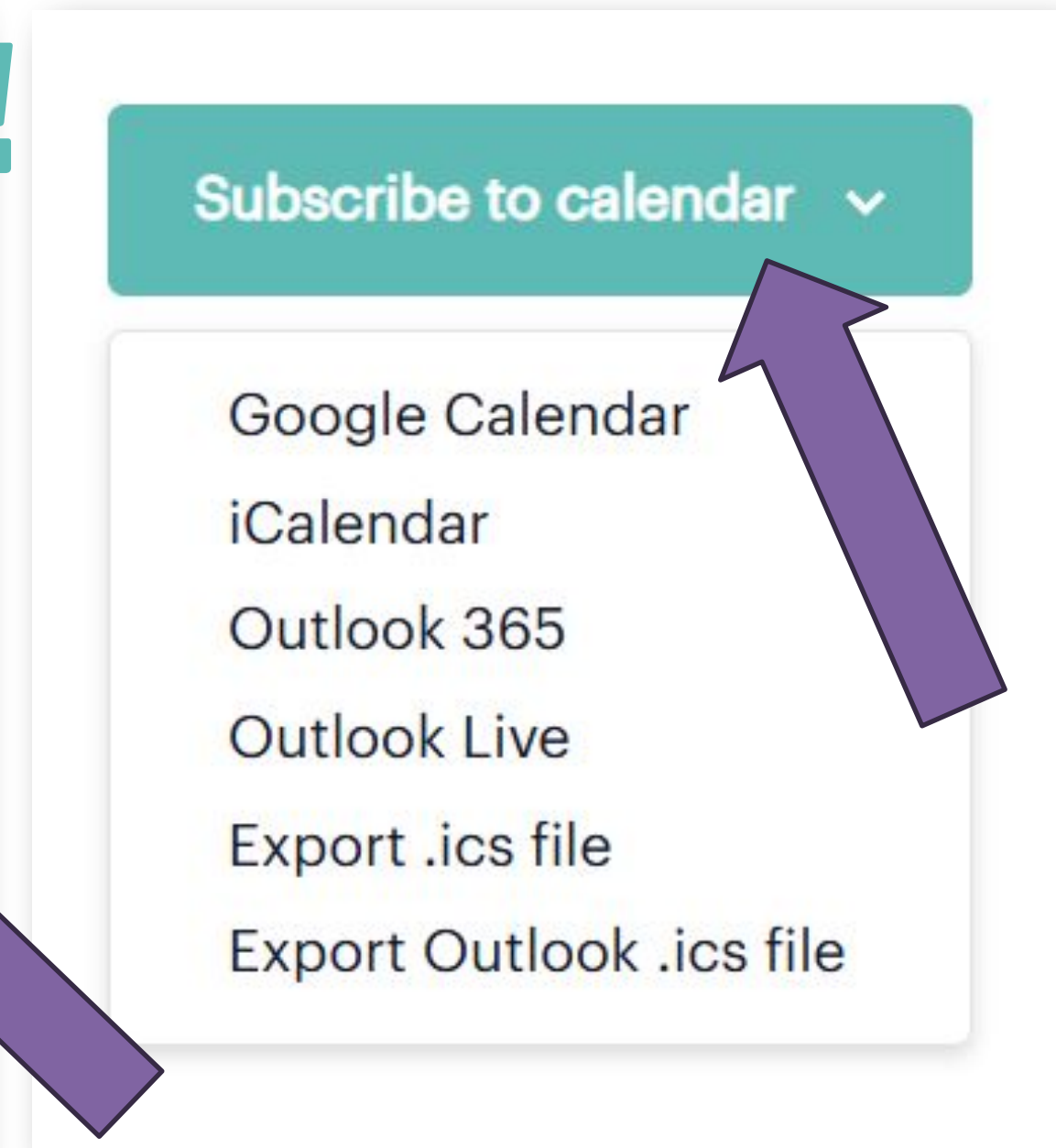
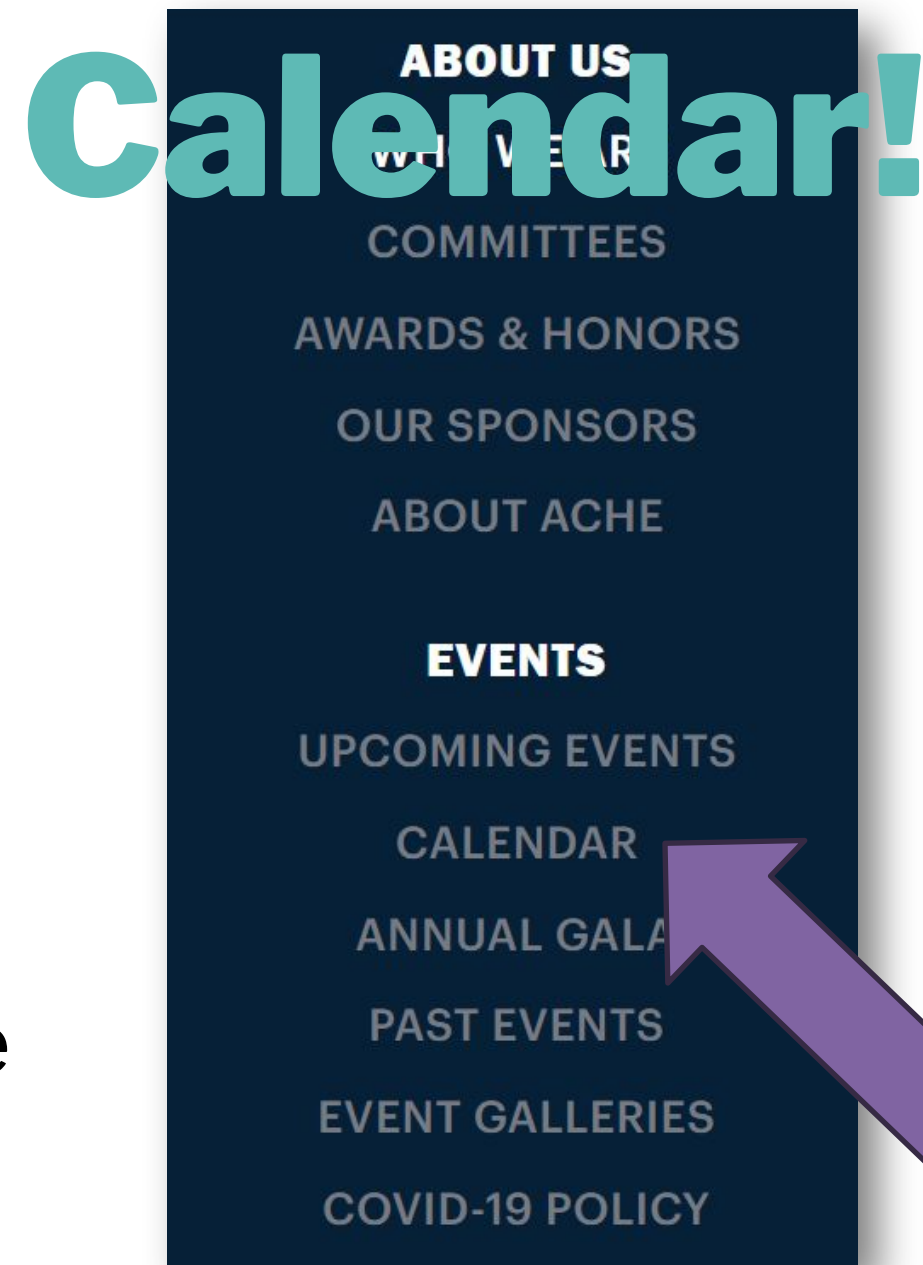
- Cocktails with the Chiefs - **April 21st**
- FACHE Board of Governors Exam Test Prep Course - **May 6th**
- Reimagining the Future of Ambulatory Care - **May 19th**
- HLNY Tour of LiveOnNY's Donate Eight Simulation Center - **June 17th**
- Gala and Awards Presentation - **June 30th**
- Past President's Boat Cruise - **July 21st**
- Better Together - **August**
- Mini-Congress - **October 22nd**
- Frank Camerano Memorial Dinner and Lecture - **November**
- Holiday Party - **December 1st**





Subscribe to the HLNY Events

1. Go to **hlny.org/calendar**
(Navigate from main page)
2. Scroll to the bottom
3. Select “**Subscribe to calendar**”
4. Select type of calendar file





DIAMOND SPONSORS



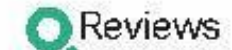
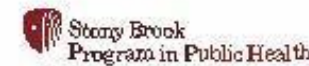
PLATINUM SPONSORS



GOLD SPONSORS



SILVER SPONSORS



BRONZE SPONSORS





**HEALTHCARE LEADERS
of NEW YORK**

Your official ACHE chapter

Become a Sponsor Today!

Interested, please contact: **sponsors@hlny.org**.
Our team will be in touch with you.

2026 HLNy Membership Survey

Member Benefits

- Chance to win raffle prizes for participation
- Directly influence future events, programs, and offerings
- Ensure your voice is heard in chapter decision-making
- Help shape a more valuable and relevant member experience

Raffle Prizes: FREE Virtual Event, FREE CwC ticket, FREE Membership Mixer ticket



Please take a moment to participate in our Membership Survey for a chance to enter the raffle!



**HEALTHCARE LEADERS
of NEW YORK**

Your official ACHE chapter

Thank you for joining us!



hlny.org



Healthcare Leaders of New York (HLNY)



advancement@hlny.org



youtube.com/@healthcareleadersofnewyork



[@healthcareleadersofny](https://www.instagram.com/healthcareleadersofny)



Follow Us!



**HEALTHCARE LEADERS
of NEW YORK**

Your official ACHE chapter

Appendix: Speaker Bio



sponsors@hlny.org



HEALTHCARE LEADERS of NEW YORK

Your official ACHE chapter

Latoya O’Gere, DNP, RN, NE-BC, FACHE

Latoya O’Gere is the **Regional Director of Nursing at New York City Health and Hospitals | Gotham Health**. In partnership with the Regional Medical Director and Regional Administrative Director, Dr. O’Gere provides leadership oversight for the Brooklyn and Manhattan regions spanning a total of 16 Community Health Centers. Throughout her nursing career, Latoya has served in various nursing leadership positions with expertise in nursing operations, ambulatory care management, chronic disease management, and performance improvement. She holds a Doctorate in Nursing Practice with a focus on Healthcare Systems Leadership and is a **Fellow of the American College of Healthcare Executives**. She is also ranked as an **Adjunct Professor of Nursing at Mercy University**.





HEALTHCARE LEADERS of NEW YORK

Your official ACHE chapter



Benzy Babykutty, MBA, BSN, RN, FACHE, FNYAM

Professional Biography

Benzy Babykutty **MBA, BSN, RN, FACHE, FNYAM** is the Director of Patient Care Services at Mount Sinai Morningside, where he leads clinical operations across Critical Care, Medicine, and Surgery division. He is widely recognized for driving transformational outcomes in quality, safety, patient experience, workforce engagement, and financial stewardship. He is passionate about building high-performing teams, advancing age-friendly care through innovative initiatives like the 4Ms Bootcamp, and mentoring the next generation of healthcare leaders. His leadership philosophy seamlessly integrates operational excellence with human-centered care to deliver sustainable, high-impact results. He holds a **Master of Business Administration** degree and is a **Fellow of the American College of Healthcare Executives (FACHE)** and a **Fellow of the New York Academy of Medicine(FNYAM)**.



HEALTHCARE LEADERS of NEW YORK

Your official ACHE chapter

Kathleen Gaine, MBA, FACHE

Professional Biography

Kathleen Gaine is a **Senior Director for Regulatory Affairs and Planning** at **New York-Presbyterian Hospital**, where her work focuses on regulatory planning, compliance, and government relations. In this role, she supports hospital regulatory standards and planning initiatives throughout the NYP healthcare system. She previously spent **16 years at the New York State Department of Health**, bringing deep public-sector insight to her current leadership responsibilities. She holds a **Master of Public Administration** degree and is a **Fellow of the American College of Healthcare Executives (FACHE)**.





HEALTHCARE LEADERS of NEW YORK

Your official ACHE chapter



Nicole Rossol, MS, FACHE, CCLS

Professional Biography

Nicole Rossol is the **Chief Patient Experience Officer at Stony Brook Medicine**, where she leads the design and execution of a comprehensive, system-wide experience strategy that embeds a culture of connection across every touchpoint of care. Nicole brings more than two decades of leadership experience committed to advancing patient, caregiver, and workforce engagement. Nicole holds a Master of Science degree and is a Fellow of the American College of Healthcare Executives. She served as Adjunct Faculty at Bank Street College of Education and as a co-facilitator with Stony Brook University's Alan Alda Center for Communicating Science. Nicole was a Public Member on the Board of the Council on Surgical and Perioperative Safety, serves on Press Ganey's Chief Experience Officer Council, and The Beryl Institute Executive Leadership Committee. Nicole is passionate about leadership, engagement, and improving the human experience of care, speaking nationally on these topics.